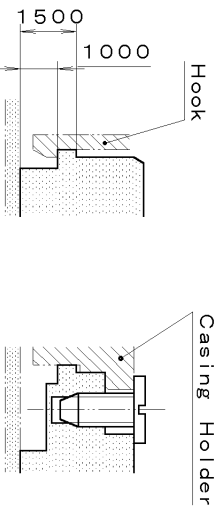
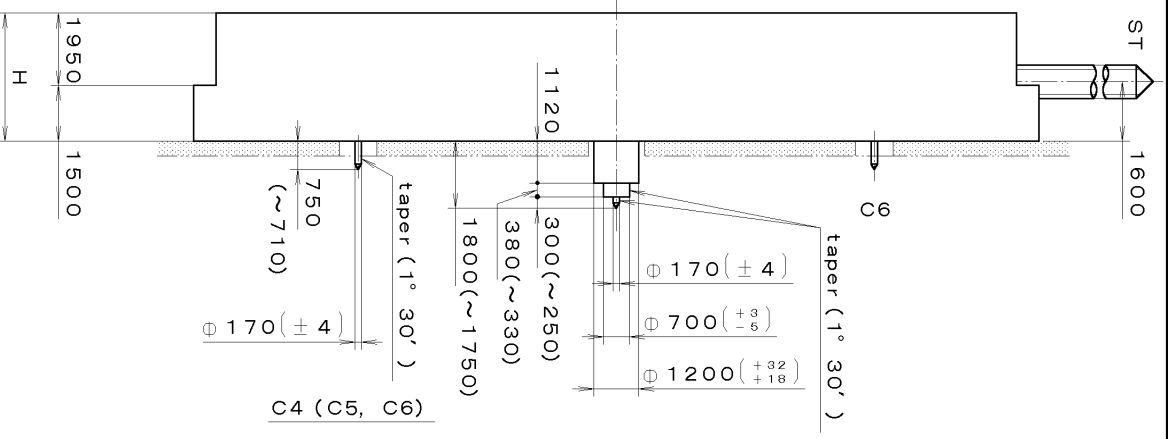
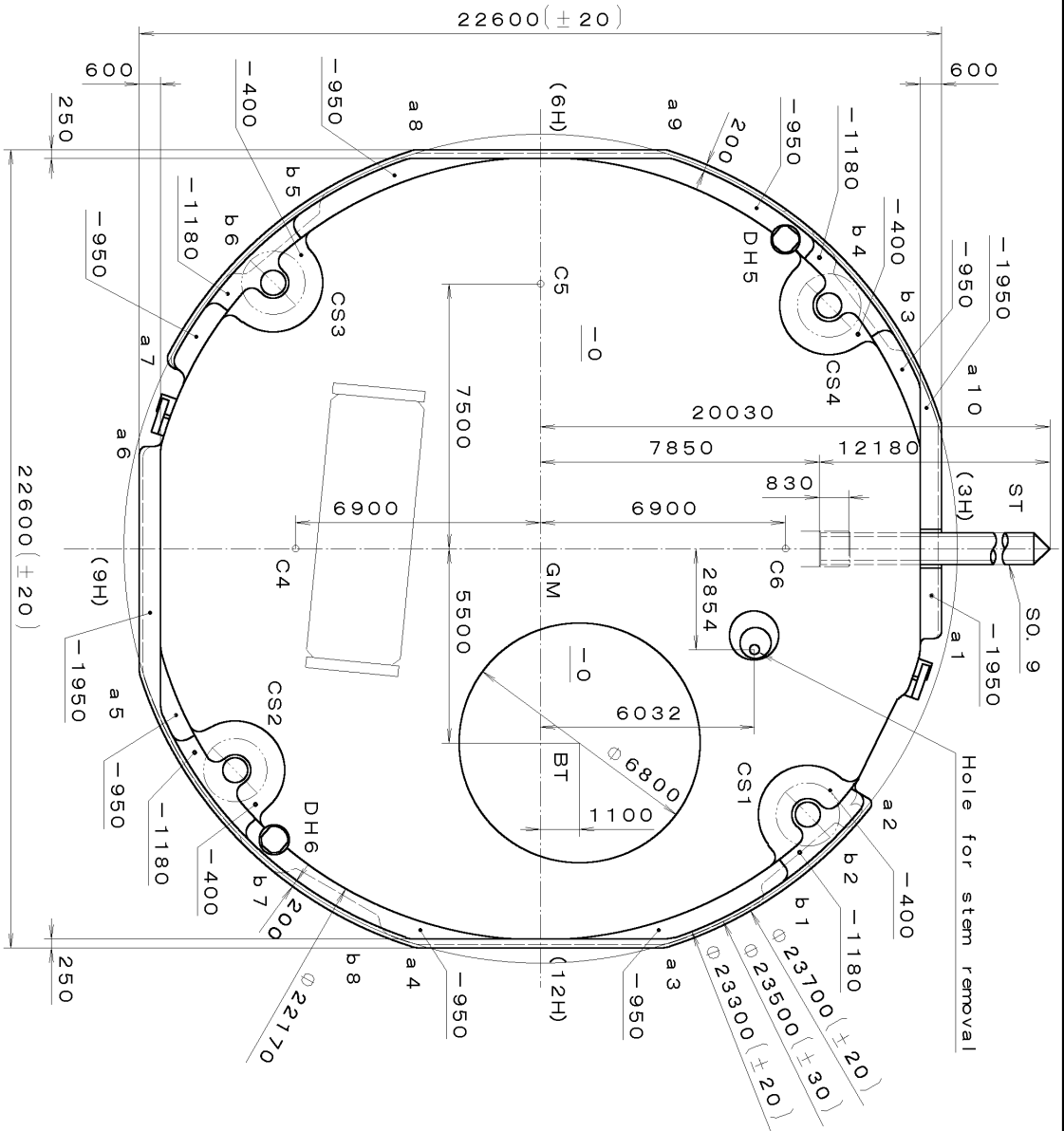


DH5~DH6=22287 (±20)

Coordinates			
Mark	X	Y	R
GM	0	0	—
DH5	-8759	6900	—
DH6	8251	-7500	—
a1	2351	11100	200
a2	7235	9131	200
a3	10800	3490	500
a4	10800	-3490	500
a5	3490	-10900	500
a6	-2700	-11100	200
a7	-5389	-10216	300
a8	-10800	-3490	500
a9	-10800	3490	500
a10	-3490	10800	500
b1	9581	6360	150
b2	7928	8331	150
b3	-5773	9946	150
b4	-7839	8415	150
b5	-9572	-6374	150
b6	-7916	-8342	150
b7	9196	-6906	150
b8	10501	-4690	150



Section b1~b8

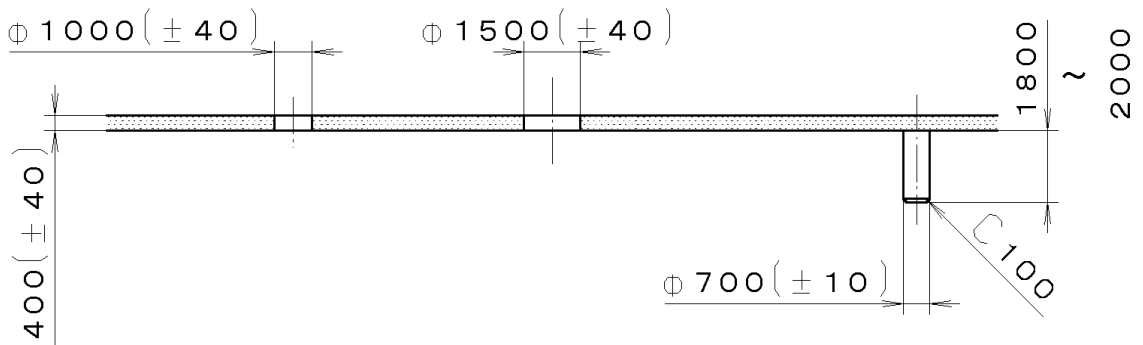
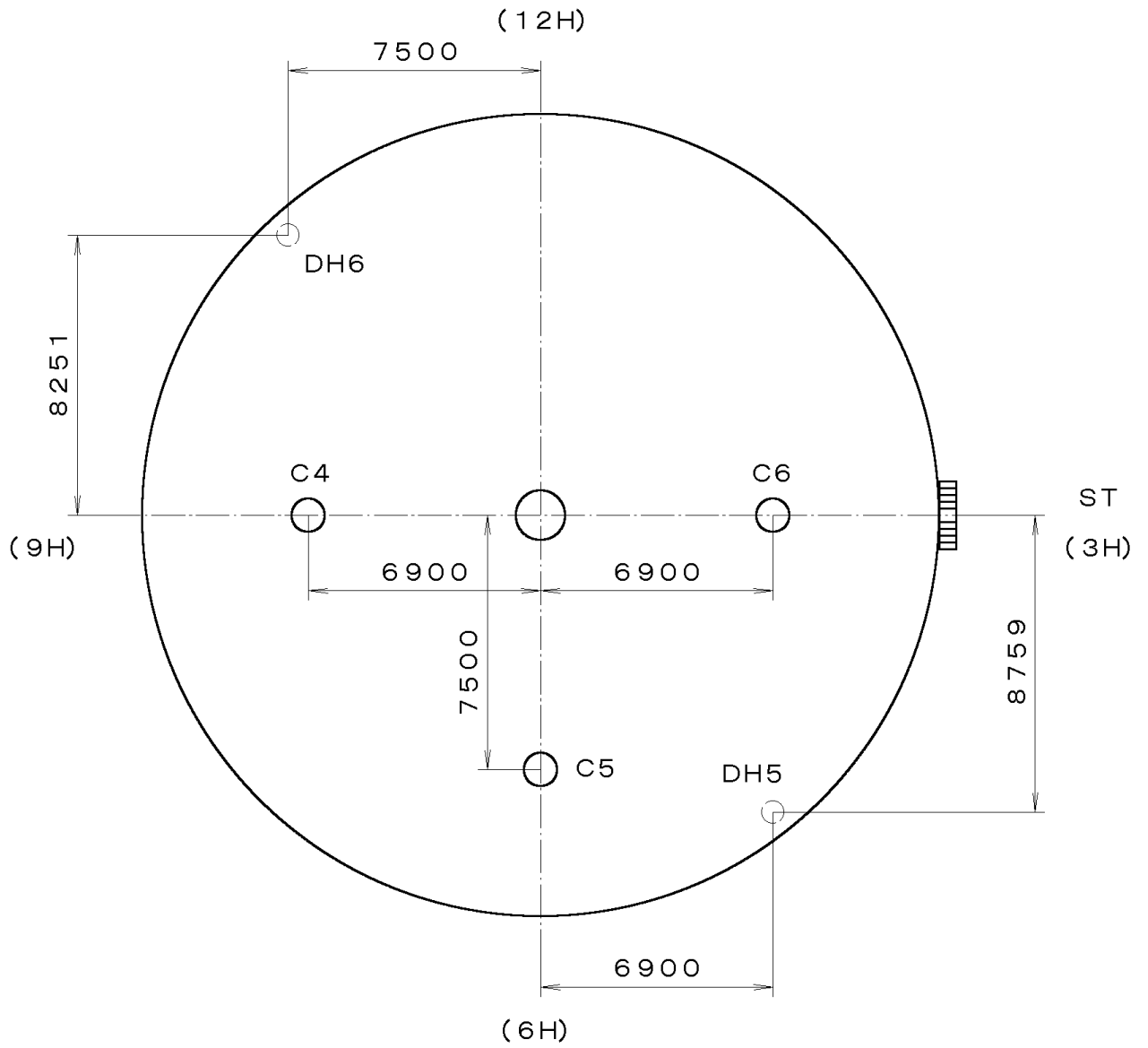
Section CS1~4

With Battery strap	H
Without Battery strap	3450

Quantity	Unit	Cal. No. :	6P29
Scale	7:1	Parts:	
Date		Name:	Frame for Case
Drawn		Approved	T. Hiruta
Checked		Drawing No. :	6P29C0000
Material		General Tolerances	
Heat Treatment		Dimensions	
Hardness		Angles	
Plating			

CITIZEN WATCH CO., LTD.
TOKYO, JAPAN

This drawing is provisional and subject to our reconfirmation and/or revision without notice.



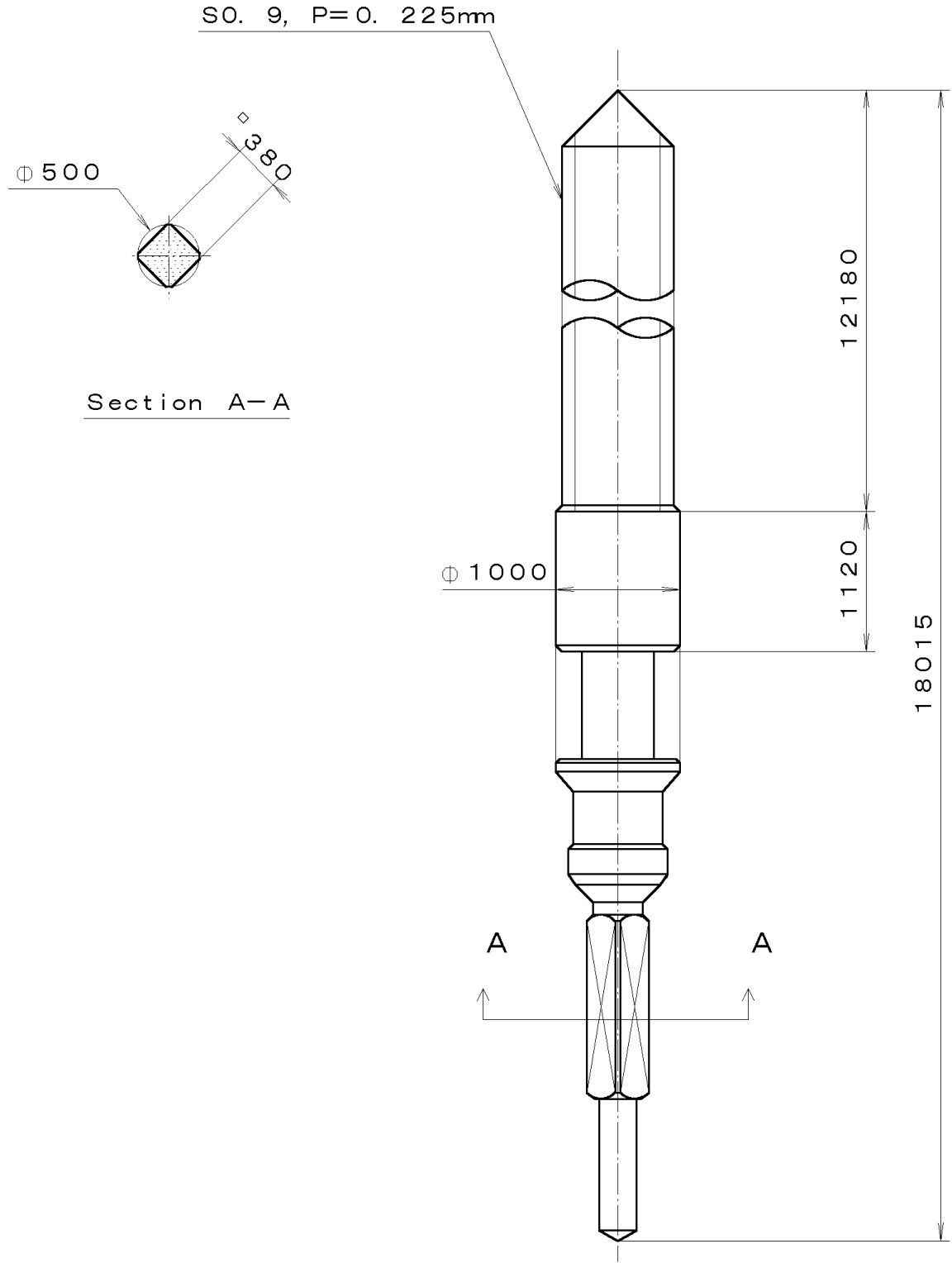
C4, C5, C6 CENTER DH5 (DH6)

7		Quantity		Cal. No. : 6P29-00A
6		Unit	1/1000 mm	
5		Scale	5:1	Parts:
4		Date		
3		Drawn		Name: Indications for Dial
2		Checked	T. Hiruta	
1		Approved		Drawing No. : 6P29D000
Material				CITIZEN WATCH CO.,LTD. TOKYO, JAPAN
Heat Treatment		General Tolerances		
Hardness		Dimensions		
Plating		Angles		

*** T I P W 6P29-00A (01) *** (2100 1121) 00-07-25

This drawing is provisional and subject to our reconfirmation and/or revision without notice.

065-379 (01) *** (2100 1121) 00-06-23



7			Quantity		Cal. No. :
6			Unit	1/1000 mm	
5			Scale	20:1	Parts:
4			Date		065-379
3			Drawn		Name:
2			Checked	T. Hiruta	SETTING STEM
1			Approved		Drawing No. : 3790S000
Material			General Tolerances		CITIZEN WATCH CO.,LTD. TOKYO, JAPAN
Heat Treatment			Dimensions		
Hardness			Angles		
Plating					